

Standpipe Meter

Yard Meter



Anodized extruded Aluminium Panels

Aluminium Top Part

Aluminium brackets connecting the panels



Low power Pilot solenoid
Water pressure opens
and closes
the membrane valve

Strainer

Manual Ball Valve



Battery pack

**Fully potted Electronics
with a two component PU**



Flowmeter and valve integrated in one body



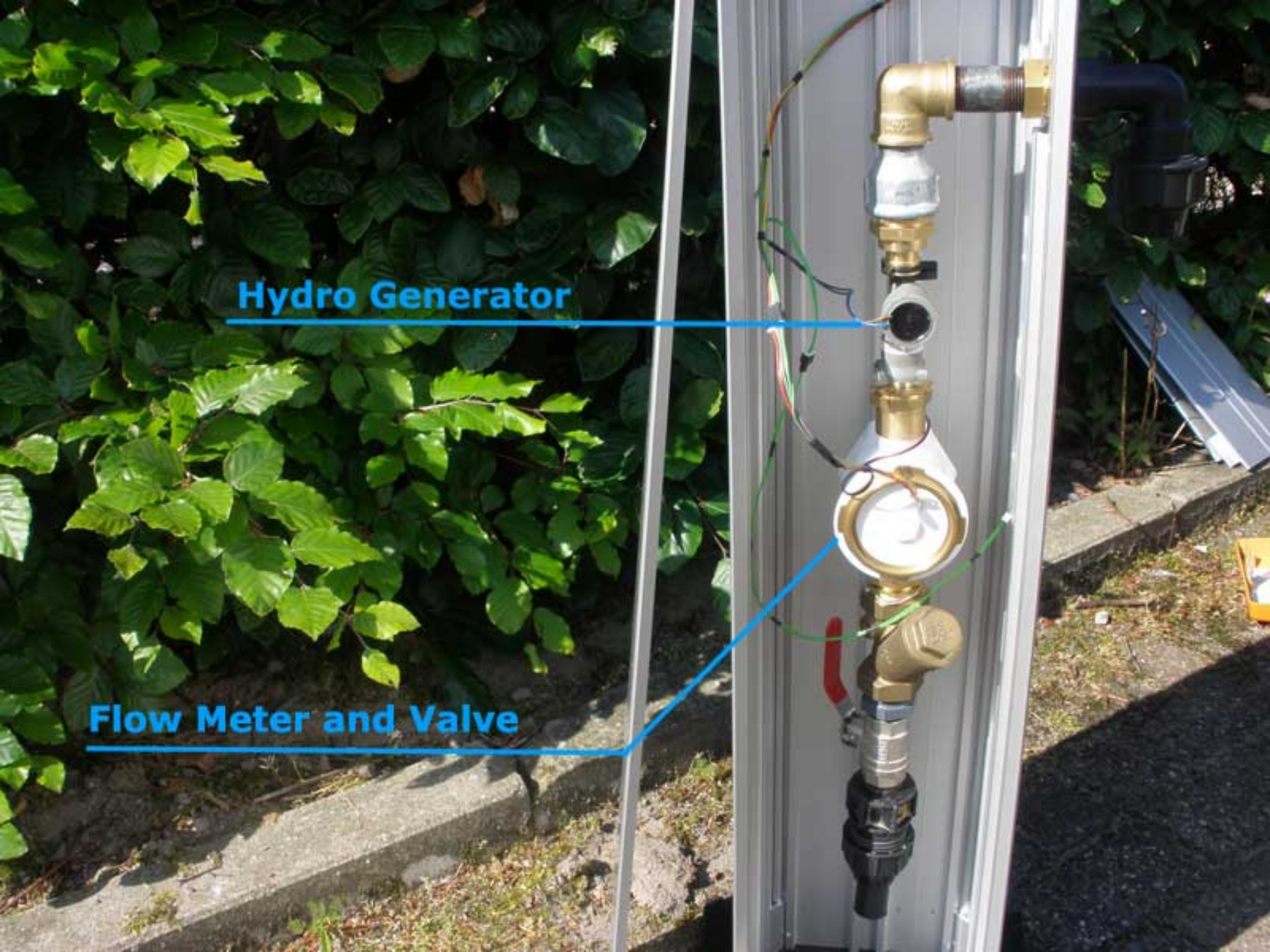
Standpipe Meter

- * Anodized Aluminium Panels**
- * Casted Aliminium Top Part**
- * Hydro Generator**
- * Manual Ball Valve**
- * Strainer**



Hydro Generator

Flow Meter and Valve





Yard Meter

Standpipe Meter

